



# CLOMICALM<sup>®</sup>

(clomipramine hydrochloride) tablets

**Separation anxiety** is not an expression of anger. It is a **distress response** characterized by:



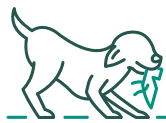
Owner-seeking



Vocalization



Soiling



Destruction

**A "Yes" answer to any of these questions means your dog may have separation anxiety.**

- Destroy walls, floors, furniture, etc., when left alone?
- Urinate or defecate in the house when left alone?
- Bark or howl excessively when left alone?
- Follow their owner from room to room?
- Constantly beg for attention?
- Become agitated when their owner prepares to leave?
- Elicit complaints from others when the owner is gone?
- Groom themselves excessively?
- Ever act confused or disoriented?
- Ever seem "hyper" or simply "out of control"?

**CLOMICALM<sup>®</sup>** (clomipramine hydrochloride) tablets are an effective treatment for canine separation anxiety as part of a behavioral management regimen.

### Safe and Effective\*

- CLOMICALM tablets, along with behavior modification, may help alleviate inappropriate barking and elimination (urination or defecation), as well as destructive behavior.
- While CLOMICALM tablets are not a sedative drug, they may cause lethargy in some dogs.

### Trusted for more than 20 years

\*CLOMICALM tablets are safe when used according to label directions.

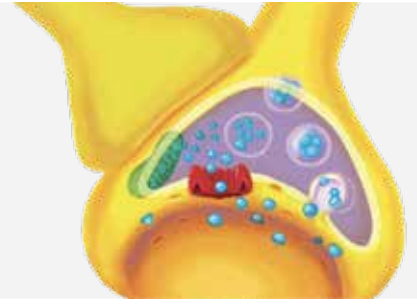


Shaping the future of animal health

# Separation anxiety is a treatable condition.

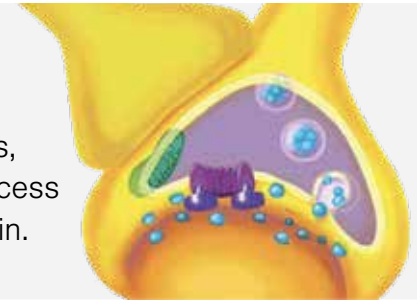
## Before CLOMICALM tablets

Serotonin is a neurotransmitter in the brain that is associated with positive emotions. After serotonin is released by a neuron, an uptake receptor collects it from the synapse and recycles it.



## After CLOMICALM tablets

Clomipramine hydrochloride, the active ingredient in CLOMICALM tablets, binds to the serotonin uptake receptor and prevents it from removing excess serotonin. This increases the positive emotional neural signals in the brain.



## Behavior modification

CLOMICALM tablets, combined with these techniques, may help to reduce separation anxiety over time.

### Before the owner leaves



- Ignore the dog for 20-30 minutes
- Leave the dog with a distracting toy or treat

### When the owner returns home



- Ignore the dog until they are relaxed and quiet
- The dog shouldn't be reprimanded for destructive behavior or inappropriate elimination

### When at home together



- Only interact with the dog at the owner's initiative
- Give departure cues (e.g., coat, keys) at times other than departure



- Increase the distance and duration of absence while teaching the dog to stay calm

### INDICATIONS

**CLOMICALM<sup>®</sup> (clomipramine hydrochloride) tablets** are to be used as part of a comprehensive behavioral management program to treat separation anxiety in dogs greater than 6 months of age. Inappropriate barking or destructive behavior, as well as inappropriate elimination (urination or defecation), may be alleviated by the use of CLOMICALM tablets in conjunction with behavior modification.

### IMPORTANT SAFETY INFORMATION

**CLOMICALM<sup>®</sup> (clomipramine hydrochloride) tablets:** For use in dogs only. Keep out of reach of children. In children, accidental ingestion should be regarded as serious. Do not administer to dogs with hypersensitivity to clomipramine or other tricyclic antidepressants. CLOMICALM tablets should not be used in: 1) male breeding dogs; 2) combination or within 14 days before or after treatment with a monoamine oxidase inhibitor; 3) dogs with a history of seizures or concomitantly with drugs which lower the seizure threshold. CLOMICALM tablets are not recommended for other behavior problems such as aggression. Effectiveness and clinical safety for long-term use (i.e., for >12 weeks) has not been evaluated. To reduce the incidence of vomiting that may be experienced by some dogs, CLOMICALM tablets may be given with a small amount of food. For full prescribing information, contact Virbac at 1-800-338-3659 or visit us.virbac.com.



# CLOMICALM<sup>®</sup>

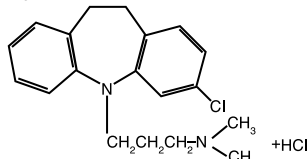
(clomipramine hydrochloride)

## Caution:

Federal law restricts this drug to use by or on the order of a licensed veterinarian.

## Description:

CLOMICALM<sup>®</sup> (clomipramine hydrochloride) tablets belong to the dibenzazepine class of tricyclic antidepressants. Clomipramine hydrochloride is 3-chloro-5-[3-(dimethyl-amino)propyl]-10,11-dihydro-5H dibenz[b,f]azepine monohydrochloride. CLOMICALM tablets are oblong, light brown in color and contain clomipramine hydrochloride formulated together with meat components. The molecular weight of clomipramine hydrochloride is 351.3. The structural formula is:



## Clinical Pharmacology:

Clomipramine hydrochloride reduces the clinical signs of separation anxiety by affecting serotonergic and noradrenergic neuronal transmission in the central nervous system. While clomipramine hydrochloride can cause lethargy in dogs (see Adverse Reactions) its mode of action is not as a sedative. Clomipramine hydrochloride's capacity to inhibit re-uptake of serotonin in the central nervous system is believed to be the primary mechanism of action. Clomipramine hydrochloride is rapidly absorbed when administered orally. A single-dose crossover study involving 12 dogs evaluated clomipramine hydrochloride bioavailability after IV (2 mg/kg) and oral (4 mg/kg) administration in either a fed or fasted state. The administration of clomipramine hydrochloride in the presence of food resulted in an increase in the rate and extent of drug absorption as shown in the following table (mean ±SD):

	AUC <sub>0-inf</sub> (nmol hr/L)	C <sub>max</sub> (nmol/L)	T <sub>max</sub> (hr)	Absolute Bioavail- ability (F)
Fed	1670±575	601±286	1.18±0.32	0.21±0.07
Fasted	1350±447	379±154	1.31±0.32	0.17±0.05

The absolute bioavailability is approximately 25% greater in fed dogs. The apparent terminal plasma half-life ranges from approximately 2 to 9 hours in fed and 3 to 21 hours in fasted dogs. The difference and variability in apparent half-life estimates may be attributable to prolonged drug absorption in the fasted state. The relatively large volume of distribution (3.8±0.8 L/kg) suggests that the drug is widely distributed throughout the body. **Clomipramine is primarily metabolized in the liver.**

**Indications and Usage:** CLOMICALM tablets are to be used as part of a comprehensive behavioral management program to treat separation anxiety in dogs greater than 6 months of age. Inappropriate barking or destructive behavior, as well as inappropriate elimination (urination or defecation) may be alleviated by the use of CLOMICALM tablets in conjunction with behavior modification.

Separation anxiety is a complex behavior disorder displayed when the owner (or other attachment figure) leaves the dog. The signs of separation anxiety evaluated in controlled trials were vocalization, destructive behavior, excessive salivation, and inappropriate elimination. In the absence of the owner or attachment figure, dogs with separation anxiety may exhibit one or more of these clinical signs. Although the owner (attachment figure) may inadvertently misinterpret this behavior, which only happens in their absence, as spiteful, it is thought to be the result of anxiety experienced by the dog. Punishment is not considered appropriate for a dog with separation anxiety.

Proper recognition of clinical signs, including a complete patient history and assessment of the patient's household environment, is essential to accurately diagnose and treat separation anxiety.

The use of CLOMICALM tablets should not replace appropriate behavioral and environmental management but should be used to facilitate a comprehensive behavior management program.

## Contraindications:

CLOMICALM tablets are contraindicated in dogs with known hypersensitivity to clomipramine or other tricyclic antidepressants. CLOMICALM tablets should not be used in male breeding dogs. Testicular hypoplasia was seen in dogs treated for 1 year at 12.5 times the maximum daily dose.

CLOMICALM tablets should not be given in combination, or within 14 days before or after treatment with a monoamine oxidase inhibitor [e.g., selegiline hydrochloride (L-deprenyl), amitraz].

CLOMICALM tablets are contraindicated for use in dogs with a history of seizures or concomitantly with drugs which lower the seizure threshold.

## Human Warnings:

**Not for use in humans. Keep out of reach of children. In case of accidental ingestion seek medical attention immediately. In children, accidental ingestion should be regarded as serious. There is no specific antidote for clomipramine. Overdose in humans causes anticholinergic effects including effects on the central nervous (e.g., convulsions) and cardiovascular (e.g., arrhythmia, tachycardia) systems. People with known hypersensitivity to clomipramine should administer the product with caution.**

## Precautions:

**General:** CLOMICALM tablets are not recommended for other behavior problems, such as aggression (see Adverse Reactions). Studies to establish the safety and efficacy of CLOMICALM tablets in dogs less than 6 months of age have not been conducted.

**Diagnosis:** It is critical to conduct a comprehensive physical examination, including appropriate laboratory tests, and to obtain a thorough history and assessment of the patient's household environment, to rule-out causes of inappropriate behavior unrelated to separation anxiety before prescribing CLOMICALM tablets. Periodic reassessment of hematological and serum biochemical data during the administration of this medication is advised. Veterinarians should be familiar with the risks and benefits of the treatment of behavioral disorders in dogs before initiating therapy. Inappropriate use of CLOMICALM tablets, i.e., in the absence of a diagnosis or without concurrent behavioral modification, may expose the animal to unnecessary adverse effects and may not provide any lasting benefit of therapy.

**Drug Interactions:** Recommendations on the interaction between clomipramine and other medications are extrapolated from data generated in humans. Plasma levels of tricyclic antidepressants have been reported to be decreased by the concomitant administration of hepatic enzyme inducers (e.g., barbiturates, phenytoin); therefore plasma concentrations of clomipramine may be decreased by the concomitant administration of phenobarbital. Plasma levels of closely related tricyclic antidepressants have been reported to be increased by the concomitant administration of hepatic enzyme inhibitors (e.g., cimetidine, fluoxetine). Tricyclic antidepressants themselves may exhibit hepatic enzyme inhibition and possibly increase plasma levels of barbiturates (phenobarbital). Caution is advised in using clomipramine with anticholinergic or sympathomimetic drugs or with other CNS-active drugs, including general anesthetics and neuroleptics. Prior to elective surgery with general anesthetics, clomipramine should be discontinued for as long as clinically feasible.

**Use in Concomitant Illness:** Use with caution in dogs with cardiovascular disease. At 20 mg/kg/day (5X the maximum recommended dose), bradycardia and arrhythmias (atrioventricular node block and ventricular extrasystole) were observed in dogs. Because of its anticholinergic properties, clomipramine should be used with caution in patients with increased intraocular pressure, a history of narrow angle glaucoma, urinary retention or reduced gastrointestinal motility. Because clomipramine is principally metabolized in the liver, caution is advised in using this medication in the presence of preexisting liver disease.

**Reproductive Safety:** Safety studies to determine the effects of CLOMICALM tablets in pregnant or lactating female dogs have not been conducted. CLOMICALM tablets should not be used in breeding males (See Contraindications).

## Efficacy:

**Dose Establishment:** A 12 week, placebo-controlled, multi-site clinical trial was conducted in the US and Europe to establish an effective dose of CLOMICALM (clomipramine hydrochloride) tablets in dogs. Treatment with CLOMICALM tablets, at 2 - 4 mg/kg/day divided twice daily, in conjunction with behavioral modification (desensitization and counterconditioning) was more effective than behavior modification alone in reducing the signs of separation anxiety in dogs.

**Dose Confirmation:** In another placebo-controlled, multi-site clinical trial, CLOMICALM tablets at 2 - 4 mg/kg/day given either once daily or divided twice daily showed significant improvement in resolving signs of separation anxiety when tested against behavioral modification alone (desensitization and counterconditioning). In this 8 week study, the rate of improvement of the dogs receiving CLOMICALM tablets with behavioral modification was significantly faster than the rate of improvement of the dogs receiving behavioral modification alone. After one week on trial, 47% of the dogs receiving CLOMICALM tablets once or twice (divided dose) daily in conjunction with behavioral modification showed clinical improvement compared to improvement in 29% of the dogs receiving behavioral modification alone.

## Safety:

CLOMICALM tablets were demonstrated to be well-tolerated in dogs at the recommended label dose of 2-4 mg/kg/day. In a six month target animal safety study, beagle dogs were dosed daily at 4 (1X), 12 (3X), and 20 (5X) mg/kg/day. Emesis was seen in all groups including the dogs receiving placebo, but occurred more frequently in dogs receiving 12 and 20 mg/kg. Decreased activity was also seen in dogs receiving the 12 and 20 mg/kg. There were no apparent treatment-related alterations in the following: body weights, physical examination findings, electrocardiograph examinations, hematology or biochemistry parameters, ophthalmoscopic examinations, macroscopic or microscopic organ examinations and organ weights. Average food and water consumption over the 26 week period was similar for control and treated groups. In a one year study, pure bred dogs were dosed daily at 12.5 (3X), 50 (12.5X), and 100 (25X) mg/kg/day. Emesis and mydriasis were observed within 15 minutes to one hour after dosing in dogs receiving 12.5, 50, and 100 mg/kg/day and lethargy was observed within 1 hour of dosing in dogs receiving 50 and 100 mg/kg. Testicular hypoplasia was seen in dogs receiving 50 mg/kg. At 100 mg/kg/day (25X) convulsions and eventual death occurred in five out of the eight dogs.

**Adverse Reactions:** Frequency and category of adverse reactions observed in dogs dosed with CLOMICALM tablets or placebo were observed in multisite clinical studies as follows.

	Adverse Reactions Reported in Placebo-Controlled Clinical Field Trials	
	CLOMICALM N=180	Placebo N=88
Emesis	36 (20%)	8 (9%)
Lethargy	26 (14%)	7 (8%)

Diarrhea	17 (9%)	4 (5%)
Polydipsia	6 (3%)	0
Decreased Appetite	6 (3%)	3 (3%)
Aggression*	3 (2%)	1 (1%)
Seizure	2 (1%)	0
Dry Mouth	1 (0.5%)	1 (1%)
Tremors	1 (0.5%)	0
Constipation	1 (0.5%)	0
Anisocoria	1 (0.5%)	0
Polyuria	1 (0.5%)	0
Hyperthermia	1 (0.5%)	0

\*These dogs displayed growling behavior towards either humans or other dogs.

**Post-Approval Experience:** Although not all adverse reactions are reported, the following adverse reactions are based on voluntary post-approval adverse drug experience reporting: lethargy/depression, anorexia, elevation in liver enzymes, vomiting and diarrhea. Hepatobiliary disease has occurred, especially in the presence of pre-existing conditions or with concurrent administration of drugs metabolized via the hepatic system. Additionally, in an overdose situation, the following signs have been reported: ataxia, convulsion(s), anticholinergic effects (e.g., mydriasis, bradycardia, tachycardia, and arrhythmia) and vocalization.

To report suspected adverse drug events, for technical assistance or to obtain a copy of the Safety Data Sheet (SDS), contact Virbac AH, Inc. at 1-800-338-3659 or us.virbac.com. For additional information about adverse drug experience reporting for animal drugs, contact FDA at 1-888-FDA-VETS or <http://www.fda.gov/reportanimalae>.

## Dosage and Administration:

The recommended daily dose of CLOMICALM tablets is 2 to 4 mg/kg/day (0.9-1.8 mg/lb/day) (see dosing table below). It can be administered as a single daily dose or divided twice daily based on patient response and/or tolerance of the side effects. It may be prudent to initiate treatment in divided doses to minimize side effects by permitting tolerance to side effects to develop or allowing the patient time to adapt if tolerance does not develop. To reduce the incidence of vomiting that may be experienced by some dogs, CLOMICALM tablets may be given with a small amount of food.

Dog Weight (lbs.)	CLOMICALM per Day	No. Tablets per Day	Tablet Strength
2.75-5.5	5 mg	1	5 mg
5.6-10.9	10 mg	2	5 mg
11-22	20 mg	1	20 mg
22.1-44	40 mg	1	40 mg
44.1-88	80 mg	1	80 mg
88.1-176	160 mg	2	80 mg

The specific methods of behavioral modification used in clinical trials involved desensitization and counterconditioning techniques. Since the manifestation of separation anxiety can vary according to the individual dog, it is advised that a specific behavior modification plan be developed based on a professional assessment of each individual case.

Once the desired clinical effect is achieved and the owners have successfully instituted the appropriate behavioral modification, the dose of CLOMICALM tablets may be reduced to maintain the desired effect or discontinued. Withdrawal side effects were not reported in studies with CLOMICALM tablets in dogs. However, in clinical practice, it is recommended to taper the individual patient dose while continuing to monitor the dog's behavior and clinical status through the dose reduction or withdrawal period. Continued behavioral modification is recommended to prevent recurrence of the clinical signs.

The effectiveness and clinical safety of CLOMICALM tablets for long-term use (i.e., for more than 12 weeks) has not been evaluated.

Professional judgment should be used in monitoring the patient's clinical status, response to therapy and tolerance to side effects to determine the need to continue treatment with CLOMICALM tablets and to continue to rule-out physiological disorders which may complicate the diagnosis and treatment of separation anxiety.

**Storage Conditions:** Store in a dry place at controlled room temperature, between 59° and 77°F (15-25°C). Store unused tablets in the original closed container.

**How Supplied:** CLOMICALM tablets are available in 5, 20, 40 and 80 mg tablet strengths in color-coded packaging for oral administration to dogs.

Keep this and all drugs out of reach of children.

Manufactured for: Virbac AH, Inc.  
P.O. Box 162059, Forth Worth, TX 76161, USA

Approved by FDA under NADA # 141-120.

© 2021 Virbac Corporation All rights reserved. CLOMICALM is a registered trademark of Virbac S.A.

11/21 - 01

