



**STELFONTA<sup>®</sup>**  
(tigilanol tiglate injection)  
1 mg/mL

## YOUR STORY BEGINS

---

A pet owner's guide to treatment with  
**STELFONTA<sup>®</sup> (tigilanol tiglate injection)**





## WHAT TO KNOW ABOUT TREATMENT with STELFONTA® (tigilanol tiglate injection)

You and your veterinarian have chosen a prescription medicine called STELFONTA as part of your dog's treatment plan.

Some preparation will be needed before your dog's treatment with STELFONTA. In this brochure, you will find information about the process and how to care for your dog afterward. And remember, always speak with your veterinarian if you have any questions about your dog's treatment.

### WHAT ARE MAST CELL TUMORS?

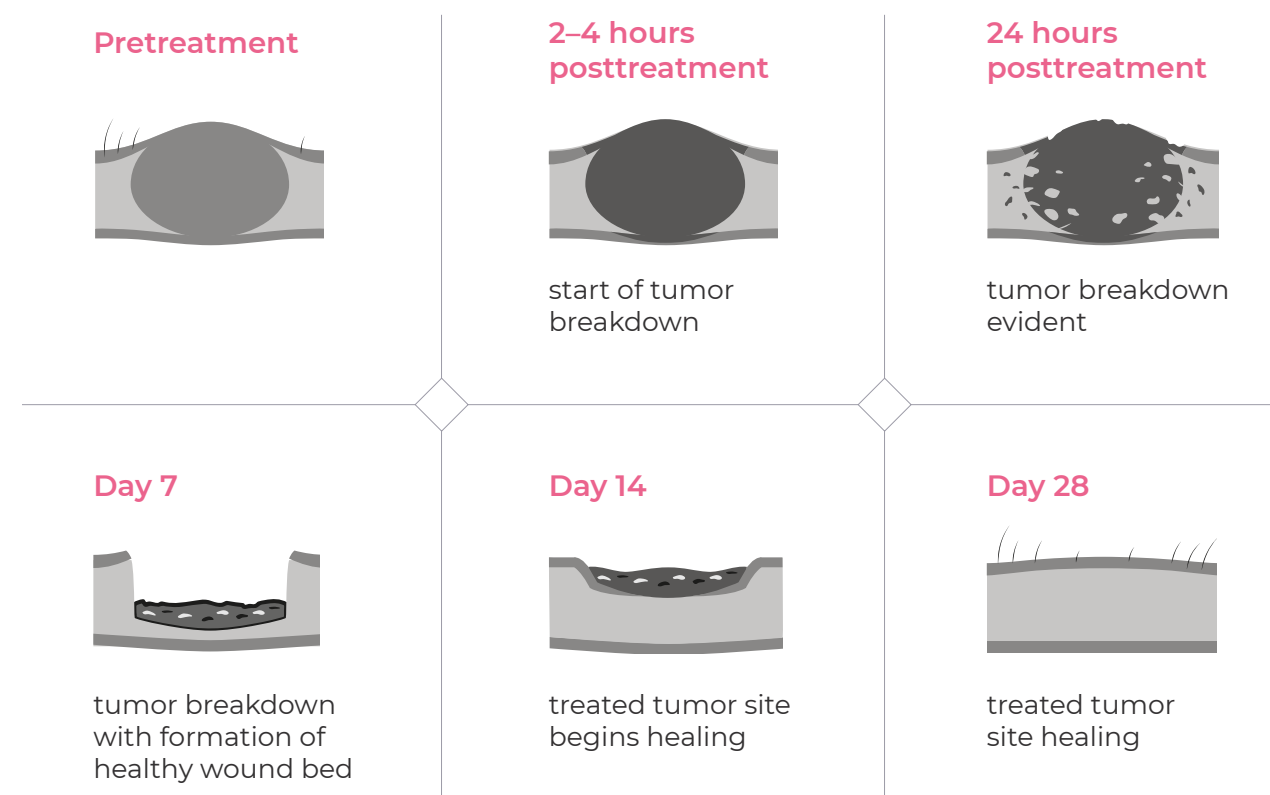
Mast cell tumors are a common form of skin cancer that affects a part of the body's immune system known as mast cells. They are the most common type of skin tumor in dogs, accounting for roughly 20% of all skin cancers.<sup>1</sup> Although mast cell tumors may affect any dog, the risk for developing them is higher in older dogs and dogs of certain breeds (including Boxers, Shar-Peis, and Golden Retrievers).<sup>2,3</sup>

### HOW DOES STELFONTA WORK?

STELFONTA is a prescription medicine used in dogs to treat mast cell tumors in the skin or in the tissues just under the skin. STELFONTA is given as an injection, directly into your dog's tumor. It destroys the tumor by breaking down cancer cells and starving their blood supply, leaving behind a "pocket" or wound at the injection site where the tumor once was. Wounds are then left open, allowing STELFONTA to promote wound healing.



**Tumors treated with STELFONTA typically go through a 4- to 6-week treatment and healing process**



### IMPORTANT SAFETY INFORMATION

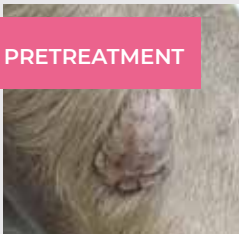
Wear disposable gloves when cleaning the treated tumor site to avoid contact with any residual drug. Thoroughly wash your skin that comes in contact with the treated tumor site, wound, or wound discharge. Ensure your dog receives their prescribed medications to decrease the potential for severe, life-threatening adverse reactions. Monitor your dog during the healing process and contact your veterinarian if you notice excessive pain, lameness, tiredness, refusal to eat for more than one day, repeated vomiting or diarrhea, trouble breathing, changes to the treated tumor site (including increased or excessive swelling and bruising, extensive wound formation, increased irritation) or any other symptoms that concern you. For full prescribing information, contact Virbac at 1-800-338-3659 or visit [us.virbac.com](http://us.virbac.com).

  
**STELFONTA®**  
(tigilanol tiglate injection)  
1 mg/mL

# THE 4 STAGES OF TREATMENT

with STELFONTA® (tigilanol tiglate injection) and what to expect at each stage

## STAGE 1: PRETREATMENT\*



### WHAT TO EXPECT

- ⬡ Treatment involves oral medications, including corticosteroids and antihistamines, in addition to the injection of STELFONTA. **These medications are very important to reduce the risks** associated with inflammatory substances that can be released from the tumor as the mast cells are destroyed
- ⬡ Premedication is given 2 days pretreatment and continues until 7 days posttreatment. **It is essential that you give the medications as prescribed**



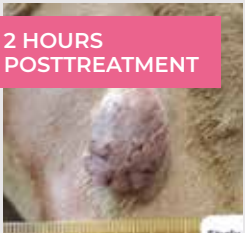
### Helpful tips

- ⬡ Tell your veterinarian about:
  - Any and all medications your dog is taking
  - Your dog's previous or current medical conditions
  - If your dog is pregnant, nursing, or if you intend to breed your dog
- ⬡ Give all medications as prescribed by your veterinarian

### IMPORTANT SAFETY INFORMATION

Wear disposable gloves when cleaning the treated tumor site to avoid contact with any residual drug. Thoroughly wash your skin that comes in contact with the treated tumor site, wound, or wound discharge. Ensure your dog receives their prescribed medications to decrease the potential for severe, life-threatening adverse reactions. Monitor your dog during the healing process and contact your veterinarian if you notice excessive pain, lameness, tiredness, refusal to eat for more than one day, repeated vomiting or diarrhea, trouble breathing, changes to the treated tumor site (including increased or excessive swelling and bruising, extensive wound formation, increased irritation) or any other symptoms that concern you. For full prescribing information, contact Virbac at 1-800-338-3659 or visit [us.virbac.com](https://us.virbac.com).

## STAGE 2: TREATMENT DAY\*



### WHAT TO EXPECT

- ⬡ At the veterinary clinic, your veterinarian will inject STELFONTA directly into the tumor site
- ⬡ Most dogs do not need sedation or anesthesia during the procedure although occasionally, dogs may be sedated
- ⬡ Side effects reported in dogs treated with STELFONTA were generally mild and short lasting
  - The most common adverse reactions included wound formation, injection-site pain, lameness in the treated limb, vomiting, diarrhea, and hypoalbuminemia (low levels in the blood of the protein albumin).

### Things you may notice (within 4 hours after treatment)

- ⬡ Changes in color of tumor
- ⬡ Possible swelling at treated tumor site



**STELFONTA®**  
(tigilanol tiglate injection)  
1 mg/mL

\*Photos shown on these pages feature a 12-year-old Pitbull with a mast cell tumor on his right thigh, treated with one injection of STELFONTA.

### STAGE 3: TUMOR BREAKDOWN (DAYS 1 TO 7)\*



#### WHAT TO EXPECT

- Bruising or swelling may appear at the treated tumor site, which may last for several days and may cause your dog some discomfort
- The treated tumor site may blacken and leak some fluid for **a few** days
- A reddish “pocket” or wound will form, which allows healthy new skin to grow
- An odor may be given off from the treated tumor site



#### Helpful tips

- Keep wound clean and uncovered. To clean site, use warm water and wear disposable gloves
- Pain medication may be prescribed to relieve discomfort
- Make sure your dog has access to drinking water after treatment

### STAGE 4: WOUND RESOLUTION (WEEKS 2 TO 4+)\*



#### WHAT TO EXPECT

- During this stage:
  - Healthy new skin grows, closing over the wound
  - Skin returns to its original color and hair typically regrows
- Your veterinarian will schedule regular follow-up visits. In some cases, a second injection may be needed if your dog's tumor has not been completely removed



#### When to contact your veterinarian

Contact your veterinarian right away if:

- Your dog is experiencing vomiting, loss of appetite, pain, lethargy, or extensive swelling
- Your dog is excessively licking or rubbing the treatment site
- Your veterinarian may recommend an Elizabethan collar (or e-collar) or a dry gauze bandage to cover the wound
- You have any questions about your dog's treatment or recovery



SCAN ME

For more images of dogs treated with STELFONTA, go to <https://vet-us.virbac.com/home/stelfonta/evidence.html#casestudies> or use the camera on your smartphone to capture this QR code.

\*Photos shown on these pages feature a 12-year-old Pitbull with a mast cell tumor on his right thigh, treated with one injection of STELFONTA.

**STELFONTA**<sup>®</sup>  
(tigilanol tiglate injection)  
1 mg/mL



# BUILD YOUR SUCCESS STORY

with STELFONTA® (tigilanol tiglate injection)



## Wendy and Barney

*Barney's tumor was on his bottom—a tricky place to treat surgically, especially since his tumor was so close to the bowel. And because there's always risks with anesthesia in older dogs, STELFONTA was an easy choice for us to make.*



## Charlie and Buddy

*He responded [to STELFONTA] very well and extremely quickly. He is now happy and cancer free.*



SCAN ME

To learn more about STELFONTA, visit <https://vet-us.virbac.com/stelfonta> or use the camera on your smartphone to capture this QR code.

### IMPORTANT SAFETY INFORMATION

Wear disposable gloves when cleaning the treated tumor site to avoid contact with any residual drug. Thoroughly wash your skin that comes in contact with the treated tumor site, wound, or wound discharge. Ensure your dog receives their prescribed medications to decrease the potential for severe, life-threatening adverse reactions. Monitor your dog during the healing process and contact your veterinarian if you notice excessive pain, lameness, tiredness, refusal to eat for more than one day, repeated vomiting or diarrhea, trouble breathing, changes to the treated tumor site (including increased or excessive swelling and bruising, extensive wound formation, increased irritation) or any other symptoms that concern you. See inside for full prescribing information or contact Virbac at 1-800-338-3659 or visit [us.virbac.com](https://us.virbac.com).

**References:** 1. Garrett LD. Canine mast cell tumors: diagnosis, treatment, and prognosis. *Vet Med (Auckl)*. 2014;5:49–58. 2. Dobson JM, Lascelles BD. *BSAVA Manual of Canine and Feline Oncology*. 3rd ed. Gloucester, UK: British Small Animal Veterinary Association; 2016. 3. Śmiech A, Łopuszyński W, Ślaska B, Bulak K, Jasik A. Occurrence and distribution of canine cutaneous mast cell tumour characteristics among predisposed breeds. *J Vet Res*. 2019;63:141–148.



**STELFONTA®**  
(tigilanol tiglate injection)  
1 mg/mL





# STELFONTA® (tigilanol tiglate injection) 1 mg/mL

For intratumoral injection in dogs only  
Antineoplastic  
Single use vial

**WARNING: SEVERE WOUND FORMATION IN HUMANS;  
EXTENSIVE WOUND FORMATION, MAST CELL DEGRANULATION,  
AND DEATH IN DOGS DUE TO MAST CELL DEGRANULATION**

## Human Safety

- Accidental self-injection of STELFONTA® may cause severe wound formation. To decrease the risk of accidental self-injection, sedation of the dog may be necessary (see Dosage and Administration, Human Warnings and Adverse Reactions).

## Dog Safety

- Always administer a corticosteroid (e.g. prednisone or prednisolone), an H1 receptor blocking agent (e.g. diphenhydramine), and an H2 receptor blocking agent (e.g. famotidine) when treating with STELFONTA to decrease the potential for severe systemic adverse reactions, including death, from mast cell degranulation (see Contraindications and Dosage and Administration).
- Do not inject STELFONTA into subcutaneous mast cell tumors located above the elbow or hock (e.g. on the body, head, or neck). This may result in accumulation of necrotic debris in the subcutaneous space increasing the risk of systemic adverse reactions, including death, from mast cell degranulation (see Contraindications, Warnings and Adverse Events).
- Treatment with STELFONTA has been associated with cellulitis and severe tissue sloughing extending away from the treated site resulting in extensive wounds that require additional treatment and prolonged recovery times (see Warnings, Precautions and Adverse Events).

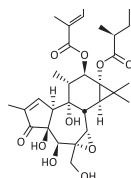
## CAUTION

Federal law restricts this drug to use by or on the order of a licensed veterinarian.

## DESCRIPTION

The active ingredient for tigilanol tiglate injection is a phorbol ester that activates alpha, beta 1, beta 11, and gamma isoforms of protein kinase C. The chemical name is (4S,5S,6R,7S,8R,9R,10S,11R,12R,13S,14R)-12-[(2E)-2-methylbut-2-enoyl]-13-[(2S)-2-methylbutyryl]-6,7-epoxy-4,5,9,12,13,20-hexahydroxy-1-tigilaen-3-one. The molecular formula is C<sub>30</sub>H<sub>42</sub>O<sub>10</sub> and its molecular weight is 562.65 g mol<sup>-1</sup>. Each mL of STELFONTA contains 1 mg tigilanol tiglate and sterile water for injection (60% v/v), propylene glycol (40% v/v), sodium acetate (<0.1% w/v), and glacial acetic acid (<0.1% w/v).

The chemical structure for tigilanol tiglate is:



## INDICATION

STELFONTA injection is indicated for use in dogs for the treatment of:

- non-metastatic cutaneous mast cell tumors
- non-metastatic subcutaneous mast cell tumors located at or distal to the elbow or the hock

## DOSAGE AND ADMINISTRATION

**ALWAYS PROVIDE THE CLIENT INFORMATION SHEET TO THE DOG OWNER BEFORE DOSE ADMINISTRATION.**

### Concomitant medications

Administer the following medications to decrease the potential for severe systemic adverse reactions from mast cell degranulation:

- Corticosteroid (e.g. oral prednisone or prednisolone at anti-inflammatory dose):** Start medication 2 days prior to STELFONTA treatment and continue for 8 days post-treatment (10 days total).
- H1 receptor blocking agent (e.g. oral diphenhydramine):** Start medication on the day of STELFONTA treatment and continue for a total of 8 days.
- H2 receptor blocking agent (e.g. oral famotidine):** Start medication on the day of STELFONTA treatment and continue for a total of 8 days.

### Dosing Instructions

Administer STELFONTA as an intratumoral injection at a dose of 0.5 mL per cm<sup>3</sup> of tumor volume, as determined by the following calculations:

- Determine the Tumor Volume in cm<sup>3</sup>:**  
 $0.5 \times [\text{length (cm)} \times \text{width (cm)} \times \text{height (cm)}]$
- Confirm the Tumor Volume does not exceed 10 cm<sup>3</sup>. Do not use STELFONTA if tumor volume is >10 cm<sup>3</sup>.
- Calculate the Dose Volume (mL) of STELFONTA to inject:**  
 $\text{Tumor Volume} \times 0.5 \text{ mL}$
- Confirm the dose of STELFONTA does not exceed 0.25 mL/kg body weight.
- Do not exceed 5 mL per dog, regardless of tumor volume or body weight.
- The minimum dose of STELFONTA is 0.1 mL, regardless of tumor volume or body weight. If the calculated dose is <0.1 mL, administer 0.1 mL.

### Administration of STELFONTA:

- Sedation may be necessary to safely and accurately administer STELFONTA to decrease the chance of accidental self-injection. Wear gloves, eye protection, and lab coat or gown in the preparation and administration of STELFONTA. Care should be taken to restrict injections to the tumor only. STELFONTA should not be injected into the margins, beyond the periphery, or deep to the tumor.
- Shave the tumor site. Avoid manipulation of the tumor.
- Draw the calculated volume of STELFONTA into a sterile Luer-lock syringe with a 23 gauge needle.
- Identify an appropriate injection point on the edge of the tumor. See Figure 1. Insertion of the needle depends on the tumor's location, form, and appearance. If a tumor protrudes above the surface of the skin, insert the needle at an oblique angle of approximately 45°.

- Insert and embed the needle in the tumor through a single injection site and draw the syringe plunger back slightly to ensure STELFONTA is not injected into a blood vessel. While applying even pressure on the syringe plunger, move the needle back and forth in a fanning manner to inject STELFONTA into the tumor. See Figure 1. The drug should fully perfuse the entire tumor.
- When the total dose of STELFONTA has been administered, pause to allow tissue dispersion before removing the needle from the tumor. Pull back on the syringe plunger to create a small negative pressure before removing the needle to minimize leakage from the injection site.
- After the needle is withdrawn, apply light pressure for 30 seconds over the needle exit hole using a gloved finger. If leakage does occur, rinse injection site with saline to wash STELFONTA from the skin surface. Do not re-administer.
- To minimize risk of accidental self-injection, do not recap the needle. Dispose of the needle and syringe.

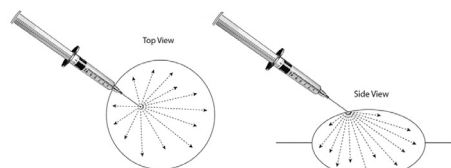


Figure 1: Dispersion of STELFONTA throughout the tumor.

## CONTRAINDICATIONS

Do not inject STELFONTA into subcutaneous mast cell tumors located above the elbow or hock (e.g. on the body, head, or neck). This may result in accumulation of necrotic debris in the subcutaneous space increasing the risk of systemic adverse reactions, including death, from mast cell degranulation (see Adverse Reactions).

## WARNINGS

### Human Safety

**NOT FOR USE IN HUMANS. KEEP THIS AND ALL MEDICATIONS OUT OF REACH OF CHILDREN.**

Caution is required during treatment to avoid accidental self-injection. Dogs undergoing treatment with STELFONTA should be adequately restrained and sedation used if necessary. Use a Luer-lock syringe to administer STELFONTA. Do not recap the needle. Accidental self-injection may result in local inflammatory reactions, including swelling, redness and severe wound formation. In case of accidental self-injection, immediately rinse the area with water, seek medical advice immediately, and show the package insert to the physician.

Wear personal protective equipment consisting of disposable gloves, protective eye wear, and a lab coat or gown when handling STELFONTA. STELFONTA is an irritant and accidental exposure to skin, eye, or by ingestion should be avoided. In case of dermal or ocular exposure, repeatedly wash the exposed skin or eye with water. If wearing contacts, rinse the eyes first then remove contacts and continue to rinse with water. If symptoms such as local signs of redness and swelling occur, or if there has been ingestion, seek the advice of a physician and show them the package insert.

Limited data is available on the potential teratogenic effects of STELFONTA. Therefore, STELFONTA should not be administered by women who are pregnant or planning to become pregnant.

People with known hypersensitivity to tigilanol tiglate or to any of the excipients should avoid contact with STELFONTA.

### Animal Safety

Dogs should be monitored during and for 5-7 days after intratumoral treatment with STELFONTA for signs of systemic mast cell degranulation such as vomiting, diarrhea, lethargy, anorexia/hyporexia, altered breathing, hypotension, urticaria, edema at or away from the treated site, or bruising at or away from the treated site. If signs are observed, appropriate treatment should be started immediately.

Always administer the recommended concomitant medications (corticosteroids, H1, and H2 receptor blocking agents) with STELFONTA. Death has occurred following mast cell degranulation when these concomitant medications were not administered according to this Package Insert (see Dosage and Administration and Adverse Reactions).

STELFONTA can induce a substantial local inflammatory reaction which may result in pain, bruising, and swelling. During this time, an analgesic may be needed in addition to the use of corticosteroids and both H1 and H2 receptor blocking agents.

Treatment with STELFONTA causes tumor necrosis which is part of the mechanism of action of the drug. Bruising, heat, pain, and swelling may begin at the site within 2 hours of treatment. By day 7 after treatment, wound formation including full thickness dermal necrosis with exudate, peripheral tissue edema, erythema, skin discoloration, tissue sloughing, and necrotic eschar may occur.

In addition to tumor necrosis, treatment with STELFONTA has been associated with cellulitis and severe tissue sloughing extending away from the treated site resulting in extensive wounds (see Adverse Reactions).

Do not inject STELFONTA into normal subcutaneous tissue or adjacent tissues (e.g. beyond tumor margins) because severe edema, erythema and necrosis of the injected tissue may occur.

## PRECAUTIONS

STELFONTA has not been evaluated in dogs with signs of systemic disease due to the mast cell tumor(s).

STELFONTA is not intended for the treatment of metastatic mast cell tumors.

The safe and effective use of STELFONTA has not been evaluated for simultaneous treatment of more than one mast cell tumor.

The safe and effective use of STELFONTA has not been evaluated in dogs with a mast cell tumor volume >10 cm<sup>3</sup>.

Use STELFONTA with caution in tumors located within mucocutaneous regions (e.g., eyelids, vulva, prepuce, and anus) as tumor necrosis could cause a change in morphology of the mucocutaneous region resulting in loss of functional integrity. Use STELFONTA with caution in mast cell tumors with significant ulceration as leakage of the drug from the ulcerated area may occur following treatment potentially reducing effectiveness.

The safe use of STELFONTA has not been evaluated in dogs with concurrent diseases that may result in delayed wound healing.

After treatment with STELFONTA, dogs may require additional care of the treated site to aid in the healing process. An Elizabethan collar or a non-constricting dry gauze bandage may be needed to prevent the dog from self-traumatizing the treated site.

After treatment with STELFONTA, separation from other household animals may be necessary to prevent grooming and trauma to the treated site.

The safe use of STELFONTA under conditions of use has not been evaluated in dogs younger than 3.5 years old.

The safe use of STELFONTA has not been evaluated in dogs that are pregnant, lactating, or intended for breeding.

## ADVERSE REACTIONS

### Human Exposure

There was one human exposure during the field study where the veterinarian had a needle stick injury to the thumb at completion of tumor treatment and was injected with an unknown amount of STELFONTA. The incident resulted in pain and necrosis of the center of the thumb at the point of needle stick. The wound healed over a

period of three months. See Pictures 1 and 2 below. A separate needle stick injury was reported with a maximum potential dose of 0.1 mL tigilanol tiglate into the distal extremity of the left index finger, resulting in a localized burning sensation, local inflammation, bruising, muscular pain up the left arm, and localized tissue necrosis. Muscular pain resolved in the first 12-24 hours and the wound healed in 8 weeks. There have been other needle stick injuries reported, with at least one injection into a thumb, with minimal (stinging, pain, and swelling) to no adverse events associated with these accidental self-injections.

Picture 1. Thirteen days after self-injection



Picture 2. Seventy-four days after self-injection



## Field Study

In a well-controlled, multi-center, randomized, double-masked field study evaluating the effectiveness and safety of STELFONTA for the treatment of cutaneous and subcutaneous mast cell tumors in dogs, 117 dogs treated with STELFONTA and 42 dogs receiving sham treatment (untreated control) were evaluated for safety. Eighty-one dogs were treated with STELFONTA on Day 0. Thirty-six previously untreated control dogs were treated with STELFONTA on Day 30. In addition, 18 dogs treated with STELFONTA on Day 0 had the same tumor re-treated with STELFONTA on Day 30 due to incomplete response. The most common adverse reactions included wound formation, injection site pain, lameness in the treated limb, vomiting, diarrhea, and hypoalbuminemia. Wound formation, vomiting, and diarrhea were mainly observed within the first 7 to 10 days after treatment. Injection site pain and lameness in the treated leg were mainly observed within the first 2 days after treatment. Hypoalbuminemia was mainly observed within the first 28 days after treatment. All dogs received concomitant medications as noted in the Effectiveness section. The adverse reactions during the study are summarized in Table 2 below.

Table 2: Adverse Reactions During the Field Study

Adverse Reaction	STELFONTA 1 <sup>st</sup> Treatment (n = 117)	STELFONTA 2 <sup>nd</sup> Treatment (n = 18)	UNTREATED CONTROL (n = 42)
Wound formation	110 (94.0%)	12 (66.7%)	3 (7.1%)
Injection site pain	61 (52.1%)	7 (38.9%)	1 (2.4%)
Lameness in treated limb	29 (24.8%)	2 (11.1%)	1 (2.4%)
Vomiting	24 (20.5%)	3 (16.7%)	4 (9.5%)
Diarrhea	24 (20.5%)	3 (16.7%)	2 (4.8%)
Hypoalbuminemia <sup>a</sup>	21 (18.0%)	2 (11.1%)	1 (2.4%)
Injection site bruising/erythema/edema/irritation	20 (17.1%)	3 (16.7%)	1 (2.4%)
Anorexia	14 (12.0%)	2 (11.1%)	3 (7.1%)
Regional lymph node swelling/enlargement	13 (11.1%)	1 (5.6%)	1 (2.4%)
Tachycardia	12 (10.3%)	0 (0.0%)	1 (2.4%)
Weight loss	12 (10.3%)	3 (16.7%)	5 (11.9%)
Cystitis	10 (8.6%)	1 (5.6%)	2 (4.8%)
Dermatitis	9 (7.7%)	1 (5.6%)	1 (2.4%)
Personality/behavior change	8 (6.8%)	0 (0.0%)	2 (4.8%)
Infection at injection site	8 (6.8%)	0 (0.0%)	0 (0.0%)
Tachypnea	7 (6.0%)	2 (11.1%)	1 (2.4%)
Pruritus	6 (5.1%)	3 (16.7%)	2 (4.8%)
Lethargy/Depression	6 (5.1%)	1 (5.6%)	1 (2.4%)
Pyrexia	3 (2.6%)	2 (11.1%)	0 (0.0%)

<sup>a</sup> There was a statistically significant decrease in albumin and albumin/globulin ratios at Day 7 in the STELFONTA group compared to the control group. The hypoalbuminemia ranged from 2.0 to 2.6 g/dL (reference range 2.7-3.9 g/dL).

Note: If an animal experienced the same adverse reaction more than once, only the highest grade was tabulated.

Adverse reactions were graded using the Veterinary Co-operative Oncology Group - Common Terminology Criteria for Adverse Events (VCOG-CTCAE).<sup>1</sup> Most adverse reactions were Grade 1 (mild) or 2 (moderate). Grade 3 (severe) and 4 (life-threatening) adverse reactions in dogs treated with STELFONTA included: lameness in the treated limb (6 dogs), injection site pain (4 dogs), wound formation (3 dogs), lethargy/depression (3 dogs), anorexia (2 dogs), infection at injection site (1 dog), pruritis (1 dog), and tachycardia (1 dog).

Adverse reactions associated with use of the required concomitant corticosteroids were similarly reported in STELFONTA and untreated control dogs and included elevated alkaline phosphatase, polyuria, and polydipsia.

### Wound Formation

Tumor observations were conducted at 2, 4, 8, and 24 hours and 4 days after treatment. The 81 dogs treated with STELFONTA on Day 0 were reported most frequently with swelling, bruising, pain and heat at all tumor observation timepoints. The following were reported at 24 hours post treatment:

- Swelling: 97.5% (79/81 dogs)
- Bruising: 91.4% (74/81 dogs)
- Pain: 69.1% (56/81 dogs)
- Heat: 53.1% (43/81 dogs)

At 24 hours post treatment, intact skin was reported in 71.6% (58/81 dogs) of STELFONTA® (tigilanol tiglate injection) treated dogs. On Day 4 intact skin was reported in 17.3% (14/81 dogs) of STELFONTA treated dogs. On Day 4, the following observations were reported with the highest frequency:

- Necrosis: 55.6% (45/81 dogs)
- Crater pockets: 37.0% (30/81 dogs)
- Exudate: 37.0% (30/81 dogs)
- Eschar: 28.4% (23/81 dogs)
- Ulceration: 11.1% (9/81 dogs)

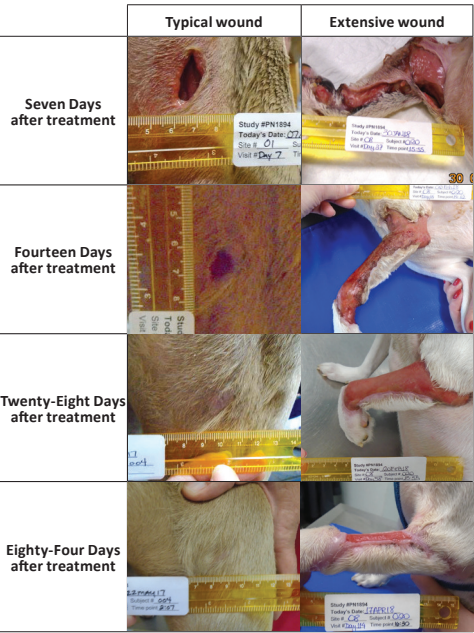
A wound healing assessment was performed on the effectiveness dataset which included 80 dogs in the STELFONTA group and 38 dogs in the untreated control group. Wounds developed in 92.5% (74/80) of STELFONTA treated dogs and 2.6% (1/38) of untreated control dogs by Day 7. On Day 28, the presence of wounds was 40% (32/80) in the STELFONTA group and 2.6% (1/38) in the

untreated/control group. On Day 42 and Day 84, the presence of wounds was 27.1% (16/59) and 1.8% (1/57), respectively, in the STELFONTA group. Exudate from the treated site included serous, serosanguinous, sanguineous, seropurulent, and purulent discharges were seen mainly on Day 7 and to a lesser extent on Day 14. Sloughing of the treated site was observed from Day 7 to Day 42, with decreasing frequency after Day 7. Peripheral pitting or non-pitting edema and erythema of the surrounding area were observed from Day 7 to Day 28, with decreasing intensity and frequency after Day 7. Necrotic eschar and epithelialization of the treated site was observed from Day 7 to Day 84, with decreasing frequency after Day 14. Granulation or hyper-granulation of the treated site was observed from Day 7 to Day 84, with decreasing frequency after Day 14.

The average wound size at Day 7 for a STELFONTA treated dog was 3.3 cm x 2.4 cm (original average tumor size 1.9 x 1.6 x 0.9 cm). On Day 28, the average wound size was 2.0 x 1.4 cm.

The largest total wound for a STELFONTA treated dog was reported seven days after treatment. The treated tumor was located on the left caudal stifle and the original tumor size measured 2.4 x 2.1 x 1.4 cm. The wound area initially consisted of three individual wounds recorded on the treated limb (both medial and lateral sides): 7.5 x 4.5 cm, 7.0 x 3.5 cm, and 11.5 x 7.0 cm. The wounds had reduced to 3.5 x 1.4 cm, 3.9 x 1.5 cm, and 9.7 x 4.3 cm 28 days after treatment, and 0.5 x 0.7 cm and 2.5 x 2.9 cm 42 days after treatment and were no longer present at 84 days after treatment.

One dog treated with STELFONTA was reported with an extensive wound formation (wound size 25.0 x 9.5 cm) with severe tissue slough (Grade 3) nine days after treatment of a mast cell tumor on the left metacarpal area (original tumor size 2.5 x 1.9 x 1.3 cm). The wound extended proximally up the leg to the shoulder and required bandaging of the leg and antibiotics. Scar contracture formed, requiring treatment under sedation to release the scar tissue. Clinical pathology abnormalities included elevated band neutrophils, anemia, and hypoalbuminemia. The wound had not fully healed by the end of the study 89 days after treatment. See pictures below comparing progression of this extensive wound formation versus commonly observed wound progression.



One dog treated with STELFONTA was reported with a bacterial infection and cellulitis in the right rear leg 9 days after treatment of a mast cell tumor on the right rear paw. There was bruising of the upper thigh and necrotic skin on the caudal right thigh and cranial aspect of the hock. Bloody discharge under the necrotic tissue revealed rod bacteria and toxic neutrophils. The dog was treated with intravenous fluids and antibiotics.

**Systemic Mast Cell Degranulation and Death**

Two dogs from two separate pilot studies died from a suspected mast cell degranulation reaction. Both dogs were treated with STELFONTA for a subcutaneous mast cell tumor located above the hock and did not receive the concomitant medications as prescribed.

In a pilot field study, one dog with a large (10 cm<sup>3</sup>) subcutaneous mast cell tumor on the right hip was treated with STELFONTA. The dog had a partial Response Evaluation Criteria in Solid Tumors Guideline (RECIST)<sup>1</sup> response to the initial STELFONTA injection and was re-treated with STELFONTA, 30 days following the initial injection. The patient did not receive any of the recommended concomitant medications of prednisolone, chlorpheniramine and famotidine from 24 hours after the second STELFONTA injection. On Day 2 following the second STELFONTA injection, the dog became anorexic, painful, and lethargic and had marked swelling of the right hind limb extending to the chest with hemorrhagic, ruptured blisters near the hock joint. Blood work showed anemia, hypoproteinemia, liver enzyme elevations, and white blood cell changes (leukocytosis, neutrophilia, monocytosis, and thrombocytopenia). The dog was hospitalized, received a blood transfusion, and was administered intravenous fluids, prednisolone, chlorpheniramine and tramadol. Pitting edema progressed to the neck by four days following treatment. Despite supportive care, the dog died five days following treatment likely due to degranulation of the mast cell tumor and internal necrotic discharge of the tumor.

In a separate pilot field study, one dog with a moderate (2.53 cm<sup>3</sup>) subcutaneous mast cell tumor on the left caudal hindlimb was treated with STELFONTA. The dog was treated with chlorpheniramine and meloxicam on treatment day (Day 0) and Day 1 only. The dog did not receive further concomitant medication. On Day 3 the dog was lethargic and there was significant edema at the injection site. While intravenous fluid and antibiotic therapy was initiated on Day 3, the dog rapidly deteriorated and died on the following day likely due to degranulation of the mast cell tumor. Pathology findings included widespread cellulitis, panniculitis (likely of bacterial origin), and septic peritonitis.

To report suspected adverse reactions, to obtain a Safety Data Sheet (SDS), or for technical assistance, call 800-338-3659. For additional information about adverse drug experience reporting for animal drugs, contact the FDA at 1-888-FDA-VETS or www.fda.gov/reportanimalae.

**INFORMATION FOR DOG OWNERS**

Owners should be given the Client Information Sheet to read before STELFONTA is administered and should be advised to observe their dog for potential side effects, including signs of degranulation and excessive wound formation, as described in the sheet. Advise dog owners about possible adverse reactions, when to contact a veterinarian, and how to care for the treated tumor site.

Some discharge from the site following treatment is expected. The site can be cleaned with warm water as necessary. Advise owners to wear disposable gloves when cleaning the area.

**CLINICAL PHARMACOLOGY**

**Mechanism of Action**

In non-clinical pharmacology studies, tigilanol tiglate has been shown to have three inter-related effects that are responsible for its anti-tumor effectiveness. The first effect is to cause oncolysis of tumor cells that are in direct contact with tigilanol tiglate. The oncolysis occurs within the first hours following treatment and results from the disruption of mitochondrial functioning. Secondly, at the same time, tigilanol tiglate activates a protein kinase C (PKC) signaling cascade which propagates throughout the tumor, resulting in an acute inflammatory response with swelling and erythema extending to the tumor margins and immediate surroundings. This inflammatory response is normal and necessarily contributes to the activity of tigilanol tiglate by (a) restricting blood and oxygen supply to the tumor (causing localized hypoxia) and (b) recruiting and activating innate immune cells (principally neutrophils and macrophages), which then target the tumor and release reactive oxygen species, proteases, and cytokines that function in an antimicrobial role. This acute inflammatory response generally resolves within 48 to 96 hours. The third component of the antitumor activity of tigilanol tiglate is associated with direct effects of the drug in increased permeability of the tumor vasculature (via activation of the Beta-II isoform of PKC) leading to tumor vascular destruction. The resulting outcome is tumor destruction with a deficit or wound remaining where the tumor was located. Complete healing of the resulting wound following tumor destruction by STELFONTA is typically within 6 weeks.

**Pharmacokinetics**

Pharmacokinetic properties of STELFONTA were evaluated in a pilot study monitoring systemic levels following intratumoral injection, with a dose delivered according to the size of the mast cell tumor. A dose of 0.5 mg/cm<sup>3</sup> (0.5 mL/cm<sup>3</sup>) was used in dogs with tumor volumes ranging from 0.1 to 6.8 cm<sup>3</sup> resulting in doses ranging from 0.002 mg/kg to 0.145 mg/kg and total doses ranging from 0.05 mg to 3.4 mg per dog. A total of 6 cutaneous and 5 subcutaneous mast cell tumors were treated in 10 dogs (one dog had two tumors treated consecutively). The following range of pharmacokinetic parameters were determined for STELFONTA in plasma: 1) elimination half-life (t<sub>1/2</sub>): 2.85 to 36.87 hours; 2) maximum plasma concentration (C<sub>max</sub>): 0.356 ng/mL to 13.8 ng/mL; and 3) area under the plasma concentration time-curve to the last quantifiable plasma concentration (AUC<sub>0-∞</sub>): 2.25 h\*ng/mL to 31.24 h\*ng/mL. There was no relationship between drug exposure (C<sub>max</sub> and AUC<sub>0-∞</sub>) with tumor location (cutaneous or subcutaneous) or with total dose. In an evaluation of the pharmacokinetic data from the 5 dogs with cutaneous tumors, dose levels ranged from 0.002 mg/kg to 0.145 mg/kg. The highest C<sub>max</sub> was 11.1 ng/mL and the highest AUC<sub>0-∞</sub> was 31.24 h\*ng/mL at a dose of 0.125 mg/kg. For the other 5 dogs with subcutaneous tumors, doses ranged from 0.049 mg/kg to 0.094 mg/kg. The highest C<sub>max</sub> was 13.8 ng/mL and the highest AUC<sub>0-∞</sub> was 30.81 h\*ng/mL at a dose of 0.094 mg/kg.

**EFFECTIVENESS**

The effectiveness of STELFONTA was evaluated in a well-controlled, multi-center, randomized, double-masked, field study in client-owned dogs. Enrolled dogs had non-metastatic World Health Organization stages Ia (one tumor confined to the dermis, without regional lymph node involvement) and IIa (multiple dermal tumors; large infiltrating tumors without regional lymph node involvement) mast cell tumors that were (i) cutaneous, or (ii) subcutaneous and located at or distal to the elbow or the hock). A total of 123 client-owned dogs with a mast cell tumor measuring less than or equal to 10 cm<sup>3</sup> were randomized to treatment with a single injection of STELFONTA (n=81) or untreated control (n=42). On the day of treatment, the average tumor volume was 1.7 cm<sup>3</sup> (range 0.1 to 9.8 cm<sup>3</sup>).

A total of 118 dogs were included in the effectiveness analysis; 80 dogs were in the STELFONTA group and 38 dogs were in the untreated control group. Response to treatment was evaluated using the RECIST<sup>1</sup>, where complete response (CR) is resolution of the target tumor, partial response (PR) is at least a 30% decrease in the longest diameter of target tumor, stable disease (SD) is a decrease of less than 30% or increase of less than 20% of the longest diameter of the target tumor, and progressive disease (PD) is greater than a 20% increase in the longest diameter of the target tumor.

The primary effectiveness variable compared CR rates of the target tumor between groups 28 days after treatment. At 28 days after treatment, a statistically significantly greater proportion of dogs in the STELFONTA treated group (60/80; 75%) achieved CR compared to dogs in the untreated control group (2/38; 5.3%) (p<0.0001). An objective tumor response (CR + PR) was observed in 64/80 (80%) of the STELFONTA treated dogs. Of the 60 dogs in the STELFONTA group that experienced CR at Day 28, response assessment was conducted for 59 dogs at Day 42 and for 57 dogs at Day 84. At Day 42, 59/59 (100%) were disease-free at the injection site, and at Day 84, 55/57 (96%) were disease-free at the injection site.

For all dogs, corticosteroids (prednisone or prednisolone) were initiated 2 days prior to treatment at a dose of 0.5 mg/kg orally twice daily and continued for 7 days total (2 days before, on the day of treatment and 4 days after treatment), then 0.5 mg/kg once daily for an additional 3 days. An H1 receptor blocking agent (diphenhydramine [2 mg/kg orally twice daily]) and H2 receptor blocking agent (famotidine [0.5 mg/kg orally twice daily]) were initiated on the day of treatment and continued for 7 days.

Other medications prescribed based on veterinary discretion included antibiotics, analgesics, and sedatives. The majority of antibiotics were used to treat injection site infections. The majority of analgesics were used to treat tumor pain and were mainly initiated on the day of or day after treatment. Sedatives were used for treatment administration, conducting diagnostics, anxiety, and temperament issues.

Quality of Life (QoL)<sup>3</sup> was assessed by owners throughout the study and the mean scores for the QoL assessment was similar between the STELFONTA and untreated control groups at all time points.

Eighteen of the 20 STELFONTA treated dogs without CR received a second treatment. Twenty-eight days following the second treatment, CR was observed in 8/18 (44.4%) of these dogs. Forty-two days following the second treatment, CR was observed in 7/18 (38.9%) of treated dogs.

**TARGET ANIMAL SAFETY**

The margin of safety and toxicity of STELFONTA was evaluated in one laboratory safety study and one laboratory cardiovascular study utilizing final market formulation, and one pilot field study that used non-commercial formulation.

**Laboratory Safety Study**

In a 4-week laboratory safety study, 48 healthy Beagle dogs 6 to 8 months old were administered STELFONTA intravenously over a 15-minute infusion once a week for four weeks on Days 1, 8, 15, and 22, at doses of 0, 0.025, 0.05, or 0.075 mg/kg body weight (ranges between 0.02-0.036, 0.039-0.056, and 0.06-0.08 mg/kg, respectively due to

dosing variability). Control dogs (0 mg/kg) received a vehicle control at a volume equal to the 0.075 mg/kg dose. The intravenous route was chosen for this study because subcutaneous injection was too toxic and intratumoral administration was not possible.

There were twelve dogs per group (6 male, 6 female). Four dogs/sex/group were necropsied two days following the last dose and two dogs/sex/group were necropsied following a 2-week recovery period.

All dogs survived the study, and there were no STELFONTA-related effects on body weight, body temperature, ophthalmic exam, electrocardiographic parameters, and organ weights.

The following were observed only in dogs in the groups administered STELFONTA: decreased food consumption from Days 22-29, vomiting/retching during infusion or immediately post-infusion, wound formation at the infusion site after the second or third dose, decrease in activity sporadically throughout the study, and elevations in alanine aminotransferase on Day 23.

The following were observed in all groups, including vehicle control and increased in a dose dependent manner: limited use of the leg that received the infusion occurred soon after dosing, weakness after the first dose, salivation and infusion site edema and erythema increased in frequency and severity throughout the study, and tremors occurred immediately post-infusion and increased in severity with dose.

Vomiting, retching, or tremors were typically transient and resolved within 1 hour of dosing while salivation also typically resolved within 4 hours.

Loose feces were observed in all groups in a non-dose dependent manner. Polydipsia occurred in the control, 0.05 and 0.075 mg/kg groups. Trending towards decreasing hematocrit (but still within reference intervals) was observed in all groups. One dog in the 0.05 mg/kg group was mildly anemic during recovery. Monocytosis and elevated fibrinogen were seen on Days 2 and 23 in a dose-dependent manner.

Gross pathology findings at the infusion site included inflammation, redness, and thickening of the skin. Correlative histopathology findings of the infusion site included hemorrhage, edema, inflammation, mixed cell infiltration, fibrosis, and chronic organizing thrombosis. Only one of the recovery dogs had changes at the infusion site consisting of proliferation of the intima. One dog in the 0.075 mg/kg group had a severe wound, confirmed on histopathology as ulcerative inflammation and severe necrosis with bacteria present. Gross pathology findings also included red, mottled, firm, and enlarged lymph nodes in all dose groups, including recovery dogs, confirmed on histopathology as inflammation, lymphoid hypercellularity, hemorrhage, and sinus histiocytosis. Pituitary cysts were observed in 7 dogs in all STELFONTA treated groups. One dog each from the 0.075 mg/kg group was observed to have kidney tubular vacuolation, dilation of the ventricles of the brain, and chronic inflammation of both the left thigh skeletal muscle and left sciatic nerve.

**Laboratory Cardiovascular Study**

In a 12-day laboratory cardiovascular study, 4 healthy male conscious telemeterized Beagle dogs approximately 2-4 years old were administered STELFONTA as a single intravenous infusion. Treatment consisted of four groups: vehicle control and STELFONTA at doses of 0.01, 0.025 and 0.075 mg/kg body weight. All four dogs received all treatments with at least a 3-day wash-out period.

All dogs survived the study and there were no STELFONTA-related effects on body temperatures, blood pressure, or electrocardiograms. The following were observed only after administration of STELFONTA in all dose groups: salivation, vocalization, incoordination, tremors, red feces, and decreased feces output. Retching, vomiting, incoordination, and changes in activity levels (increased and decreased) occurred in the 0.075 mg/kg group only. Tachycardia was seen for the first 2.5 hours after the 0.075 mg/kg dose only. The following were observed after administration of control or STELFONTA: excessive panting, decreased appetite, and limited usage/swelling of leg or paw. All dogs lost weight during the study. Clinical signs resolved around 4 hours post dosing.

**Pilot Field Study**

In a 28-day unmasked field study, 10 client-owned dogs, 6-14 years old were administered tigilanol tiglate (non-commercial formulation) once as an intratumoral injection at a dose of 0.5 mg tigilanol tiglate per cubic centimeter (cm<sup>3</sup>) of tumor volume, not exceeding 0.25 mg/kg body weight (maximum dose of 5 mg). One dog was enrolled a second time to treat a second mast cell tumor after successful treatment of the first tumor. See pharmacokinetic results from this study under **Clinical Pharmacology**.

The most common observations after tigilanol tiglate administration were injection site reactions including necrosis, swelling (localized edema and edema extending well beyond the tumor injection site), pain, restlessness, inflammation, erythema, bleeding ulcerations, bruising/dyscoloration, sloughing of tissue, open wound, mild drainage, malodor, and presence of granulation tissue. Three dogs experienced dermatitis with or without skin necrosis in a region nearby but distinct from the tumor injection site. One dog experienced non-weight bearing lameness, muscle atrophy and enlarged popliteal lymph node. One dog vomited after administration. Three dogs required longer healing times beyond 28 days, with the longest requiring 5 months. Hypoalbuminemia was observed in 5 dogs with hypoproteinemia observed in 1 of these 5 dogs on Day 7 and was resolved by Day 28.

**STORAGE INFORMATION**

Store STELFONTA vials refrigerated at 2°C to 8°C (35°F to 46°F). Do not freeze.

Keep the vial in the carton at all times to protect the vial from light. For single use only.

Dispose of any unused product in accordance with disposal for routine medical waste.

**HOW SUPPLIED**

STELFONTA is supplied as a sterile, colorless liquid in a 5 mL clear, single-use glass vial containing 2 mL of STELFONTA at a concentration of 1 mg/mL tigilanol tiglate in sterile water for injection.

**REFERENCES**

1. Veterinary Cooperative Oncology Group – common terminology criteria for adverse events (VCOG-CTCAE) following chemotherapy or biologic antineoplastic therapy in dogs and cats v1.1. *Vet Compar Oncol*. 20 Jul 2011.  
2. Eisenhauer EA, Therasse P, Bogaerts J, Schwartz LH, Sargent D, Ford R, Dancy J, Arbuck S, Gwyther S, Mooney M, Rubinstein L, Shankar L, Dodd L, Kaplan R, Lacombe D, Verweij J. New response evaluation criteria in solid tumors: revised RECIST guideline (version 1.1). *Eur J Cancer*. 2009; 45(2):228-247.  
3. Lynch S, Savary-Bataille K, Leeuw B, Argyle DJ. Development of a questionnaire assessing health-related quality-of-life in dogs and cats with cancer. *Vet Compar Oncol*. 2011; 9 (3):172-82.

Approved by FDA under NADA # 141-541  
STELFONTA® is a registered trademark of QBiotics Group Limited, used under license.  
Distributed by Virbac AH, Inc.  
P.O Box 162059, Version date: August 2020  
Fort Worth, Texas 76161. PC5111A  
Tel. 1-800-338-3659 A-IN-001.01